

Case Study	
Complete the Case Study	
Overview	Overview
Question 1	You manage a Microsoft Windows Server 2012 Active Directory domain. The domain includes domain controllers and member servers running Windows Server 2012 R2. All servers running Windows Server 2012 R2 have Windows Firewall enabled.
Question 2	
Question 3	
Question 4	The next several questions have the same answers. The questions each present an independent scenario. Answers can be used for multiple questions or none at all.
Question 5	

You have a several firewall rules configured for the domain profile of Windows Server 2012 R2 member server. You have created a new Group Policy object (GPO) and would like to use the firewall rules from the existing domain profile in the new policy without having to manually recreate the firewall rules in the new policy.

Which two PowerShell cmdlets should you use? (Each correct answer presents part of the solution. Choose two.)

Complete the Case Study

Overview	
Question 1	<input checked="" type="checkbox"/> Copy-NetFirewallRule
Question 2	<input checked="" type="checkbox"/> Set-NetFirewallRule
Question 3	
Question 4	<input checked="" type="checkbox"/> Set-NetFirewallSetting
Question 5	<input checked="" type="checkbox"/> Show-NetFirewallRule
	<input checked="" type="checkbox"/> Rename-NetFirewallRule
	<input checked="" type="checkbox"/> Set-NetFirewallAddressFilter

A previous administrator has configured a firewall rule on a member server running Windows Server 2012 R2. The name of the rule is NewRule1. You need to change the name of the rule to AllowOutboundTrafficForApplicationA.

Which PowerShell cmdlet should you use?

Complete the Case Study

Overview	<input type="radio"/>	Show-NetFirewallRule
Question 1	<input type="radio"/>	Get-NetFirewallAddressFilter
Question 2	<input checked="" type="radio"/>	Set-NetFirewallRule
Question 3	<input type="radio"/>	Remove-NetFirewallRule
Question 4	<input type="radio"/>	Disable-NetFirewallRule
Question 5	<input type="radio"/>	Rename-NetFirewallRule

You have a Group Policy object (GPO) named MemberServerSecurity. The MemberServerSecurity GPO contains several firewall rules. A rule named OutboundTrafficForApplicationA is disabled. You would like to enable the OutboundTrafficForApplicationA firewall rule in the policy.

Which PowerShell cmdlet should you use?

Complete the Case Study	
Overview	
Question 1	<input checked="" type="radio"/> Get-NetFirewallProfile
Question 2	<input checked="" type="radio"/> Copy-NetFirewallRule
Question 3	<input checked="" type="radio"/> Get-NetFirewallRule
Question 4	<input checked="" type="radio"/> Enable-NetFirewallRule
Question 5	<input checked="" type="radio"/> Get-NetFirewallSetting

You are configuring the firewall rules on a member server running Windows Server 2012 R2. A firewall rule named NewRule1 is currently enabled. You need to disable the rule without deleting the rule.

Which PowerShell cmdlet should you use?

Complete the Case Study

Overview	<input type="radio"/>	Set-NetFirewallAddressFilter
Question 1	<input type="radio"/>	Set-NetFirewallRule
Question 2	<input type="radio"/>	Set-NetFirewallSetting
Question 3	<input type="radio"/>	Rename-NetFirewallRule
Question 4	<input checked="" type="radio"/>	Get-NetFirewallRule
Question 5	<input type="radio"/>	Copy-NetFirewallRule
	<input type="radio"/>	New-NetFirewallRule
	<input checked="" type="radio"/>	Disable-NetFirewallRule

You are configuring a member server running Windows Server 2012 R2 and need to create a new firewall rule. You are not using any Group Policies to manage the server, so you must make the change without using a domain-based Group Policy object (GPO).

Which PowerShell cmdlet should you use?

Complete the Case Study

Overview	<div> <input checked="" type="radio"/> New-NetFirewallRule </div> <div> <input type="radio"/> Copy-NetFirewallRule </div> <div> <input type="radio"/> Remove-NetFirewallRule </div> <div> <input type="radio"/> Disable-NetFirewallRule </div> <div> <input type="radio"/> Get-NetFirewallAddressFilter </div>
Question 1	
Question 2	
Question 3	
Question 4	
Question 5	

Case Study

Complete the Case Study

Overview	Overview
Question 1	<p>The next several questions have the same answers. The questions each present an independent scenario. Answers can be used for multiple questions or none at all.</p>
Question 2	
Question 3	

You are planning to add a new virtual disk to the storage pool on a server that runs Microsoft Windows Server 2012 R2.

Which should you use?

Complete the Case Study

Overview	
Question 1	<input checked="" type="radio"/> New-VirtualDisk
Question 2	<input checked="" type="radio"/> Set-VirtualDisk
Question 3	<input checked="" type="radio"/> Measure-VM
	<input checked="" type="radio"/> Rename-VM
	<input checked="" type="radio"/> Enable-VMResourceMetering
	<input checked="" type="radio"/> Add disk diskpart

You manage a server named Server1 that runs Microsoft Windows Server 2012 R2 with the Hyper-V role installed. A Virtual Machine (VM) named VM1 runs on Server1.

You need to specify how often the data that tracks resource usage for VM1 will be saved.

What should you use?

Complete the Case Study

Overview

Question 1

Question 2

Question 3



Set-VM



New-VirtualDisk



Rename-VM



Set-VMHost

You manage a server named Server1 that runs Microsoft Windows Server 2012 with the Hyper-V role installed. A virtual machine (VM) named VM1 runs on the Hyper-V server. You need to rename a VHD file used by VM1.

As a first step, you powered off VM1.

What should you use next?

Complete the Case Study

Overview

Question 1

Question 2

Question 3



New-VirtualDisk



Add disk diskpart



Set-VirtualDisk



New-VHD



Create vdisk diskpart



Enable-VMResourceMetering



Rename-Item



Rename-VM

You are managing an Active Directory Domain Services (AD DS) domain named example.com. The domain functional level is Windows Server 2012 R2.

You need to configure Group Policy to generate audit events when users change the system time on computers.

Which audit policy setting you should configure?

Choose the correct answer

- ☐ Audit Sensitive Privilege Use
 - ☐ Audit Other System Events
 - ☒ Audit Non Sensitive Privilege Use
 - ☐ Audit Other Object Access Events
-

You manage a server named Server1 that runs Microsoft Windows Server 2012 R2 with the Hyper-V role installed. Server1 hosts two virtual machines (VMs) named VM1 and VM2. You want both VMs to be able to use a print device that is locally attached to Server1. You enable enhanced session mode on Server1 through Hyper-V Manager, but the print device is not available.

What should you do next?

Choose the correct answer

- ☐ Run Set-VM.
- ☒ Run VMConnect
- ☐ Enable enhanced session mode on VM1 and VM2.
- ☐ Install the File and Print Server role on Server1.

You configure a server running Microsoft Windows Server 2012 R2 as a print server.

You add a new print device to the print server. The print device will be configured as a network printer named OfficePrinter1. You share the printer with default permissions and add it to all client computers.

The CEO of your company explains to you that sometimes when he wants to submit a print job to the OfficePrinter1 printer, it takes too long to print because too many users submit print jobs at the same time. You need to make sure that print jobs from the CEO are always printed as soon as possible.

What should you do?

Choose the correct answer



Create two printers that are each connected to the same print device. On one printer, set security to only allow the CEO to print and set the priority to 10. On the other printer, you need to leave the default security settings, but change the priority to 5.



Create two printers, each connected to the same print device. On one printer, set security to only allow the CEO to print and set the priority to 5. On the other printer, leave the default security settings, but change the priority to 10.



Create two printers, each connected to the same print device. On one printer, set security to only allow the CEO to print. On the other printer, keep the security settings' default settings.



Set up a printer on the CEO's computer to allow direct printing to the print device.

You manage an Active Directory Domain Services (AD DS) domain named example.com. Domain controllers run Microsoft Windows Server 2012 R2.

You need to assign the permissions to the Help Desk group that will enable members to reset user passwords and force password change at next logon for all user accounts in a specific OU.

Which tool should you use?

Choose the correct answer

- ☐ Set-ADOrganizationalUnit
- ☐ Active Directory Sites and Services
- ☒ Active Directory Users and Computers
- ☐ Dsmod ou
- ☐ Active Directory Domains and Trusts

You are setting up a new network. You install the first server running Windows Server 2012 R2, but mistakenly install it as Server Core. You need to convert it to a Server with a GUI installation as quickly as possible. Installation files are located at `c:\mountdir\windows\winsxs`

What should you do?

Choose the correct answer

- ☐ Run the `Install-WindowsFeature Server-Gui-Mgmt-Infra -Restart -Source c:\mountdir\windows\winsxs cmdlet`.
 - ☐ Launch Server Manager and install Graphical Management Tools and Infrastructure and Server Graphical Shell.
 - ☒ Run the `Install-WindowsFeature Server-Gui-Mgmt-Infra,Server-Gui-Shell -Restart -Source c:\mountdir\windows\winsxs cmdlet`.
 - ☐ Run a new clean installation on the server.
-

You are the administrator for an Active Directory Domain Services (AD DS) domain named corp.local. The domain includes several servers running Microsoft Windows Server 2012 R2. This includes servers running the Server Core version of Windows Server 2012 R2.

You need to configure select servers with a static IP address. This needs to be done locally at each server.

What tools can you use to accomplish the task? (Choose two.)

Choose the correct answers

☒ Server Manager

☒ winrm

☒ netdom

☒ netsh interface

☒ SConfig

You manage an Active Directory Domain Services (AD DS) domain. Domain controllers run Microsoft Windows Server 2012 R2.

One of your job responsibilities includes deleting Active Directory user accounts for employees who have left the company.

What can you use to accomplish this? (Choose all that apply.)

Choose the correct answers



Remove-ADUser



Set-ADUser



LDIFDE



DSRM.exe



DSMod.exe

You are using the Add Roles and Features Wizard to install Active Directory Domain Services (AD DS) on a computer running Microsoft Windows Server 2012 R2 as shown in the exhibit. You click Export configuration settings and create an XML configuration file. You want to use the same configuration settings to install AD DS on a different computer that is running Windows Server 2012 R2.

What should you use?

Choose the correct answer

- ☒ Install-WindowsFeature
- ☐ Install-ADDSDomainController
- ☐ Dcpromo
- ☐ Add Roles and Features Wizard

You are an administrator for an Active Directory Domain Services (AD DS) domain. All domain controllers run Microsoft Windows Server 2012 or Windows Server 2012 R2. The domain includes an organizational unit (OU) named Temps that contains user accounts assigned to temporary employees. A portion of the Group Policy object (GPO) TempControl that is linked to the Temps OU is shown in the exhibit. Computers assigned to temporary employees run Windows 8 or Windows 8.1.

You create Software Restriction Policies (SRP) in the TempControl OU. SRP Security Levels and Additional Rules are at the default settings. You need to ensure that temporary users can run only programs installed under the Program Files and Program Files (x86) directories. Administrative effort needed to accomplish this should be kept to a minimum.

What should you do?

Choose the correct answer

- ☐ Set the default Security Level as Disallowed.
- ☐ Set the default Security Level as Basic User.
- ☒ Set the default Security Level as Disallowed and create a new Path rule to the Program Files (X86) directory with a Security Level of Unrestricted.
- ☐ Set the default Security Level as Disallowed and create new Path rules to the Program Files and Program Files (X86) directories with a Security Level of Unrestricted.
- ☐ Set the default Security Level as Basic User and create new Path rules to the Program Files and Program Files (X86) directories with a Security Level of Unrestricted.

Your network contains a Dynamic Host Configuration Protocol (DHCP) server configured on a server running Microsoft Windows Server 2012 R2.

You replace the DHCP server due to a hardware failure. You are concerned that some IP addresses may still be in use on the network from the old DHCP server. You need to configure the new server to prevent it from assigning IP addresses already in use on the network.

What should you do?

Choose the correct answer

- ☐ Configure conflict detection with a value of 0 on the server.
- ☐ Configure reservations on the server.
- ☐ Configure a deny filter on the server.
- ☒ Configure conflict detection with a value of 2 on the server.

A computer running Microsoft Windows Server 2012 R2 is configured as a file server. The folder D:/Customers is shared as CustomerData. Only the Marketing and Management groups have been granted any access to CustomerData. The Marketing and Management groups have been granted Full Control through NTFS permissions and Change through Share permissions to the groups.

You need to ensure that Marketing and Management see the folder as available, but that no other users are able to see the folder.

What should you do?

Choose the correct answer

- ☒ Enable access-based enumeration (ABE) through the shared folder properties.
- ☐ Deny the NTFS Read permission to the group Everyone.
- ☐ Change the share name to CustomerData\$.
- ☐ Configure a hard quota through File Server Resource Manager (FSRM).

You are running a Microsoft Windows Server 2012 R2 fileserver in your Active Directory domain.

The Accounting folder on the server includes a folder named SpecAccts. You share the folder with the share name SAcct. The Everyone group has Read share permissions and Modify NTFS permissions on the shared folder.

A very small number of users need access to the SpecAccts folder. You want to make sure that members of the Domain Users group are not able to browse the shared folder on the network, but it should still be accessible using the correct Universal Naming Convention (UNC) path.

What should you do?

Choose the correct answer

- ☐ Change the NTFS permissions to Deny Read for the Everyone group.
- ☒ Remove the share from the SpecAccts folder and share it again as SAcct\$
- ☐ Replace the Everyone group with the Domain Users group in share permissions.
- ☐ In File and Storage Services, enable Access Based Enumeration (ABE) for the SpecAccts folder.
- ☐ In the properties for the Accounting folder, enable Access Based Enumeration (ABE).

You are managing a network that includes a server named Server1 that runs Microsoft Windows Server 2012 R2 Server Core. You need to promote Server1 to a domain controller and add it to an existing Active Directory Domain Services (AD DS) domain.

Which two tools can you use to accomplish this task? (Choose two.)

Choose the correct answers



Ocsetup



ServerManagerCmd



PowerShell



Dism



Dcpromo



AdPrep

You are an administrator for an Active Directory Domain Services (AD DS) domain. All domain controllers run Microsoft Windows Server 2012 R2. The domain functional level is Windows Server 2008 R2. The network is configured as multiple subnets. All domain computers are running U.S. English (en-us) builds.

You log on with your administrative user account to a member server named Corp1 that is running Windows Server 2012 R2. You configure Server Manager with custom settings, including adding non-domain joined servers that are deployed in your perimeter network. You want to ensure that these custom settings are available when you run Server Manager on other domain member computers.

What should you do first?

Choose the correct answer



Create a roaming profile for you administrative user account.



Raise the domain functional level to Windows Server 2012 R2.



Add the other member servers to the same server group as Corp1 in Server Manager.



Export the Server Manager settings.

You are planning to install a new Active Directory Domain Services (AD DS) forest. You are logged on to the server named Server1 that runs Microsoft Windows Server 2012 R2. You plan to use the graphical user interface (GUI) to install and configure the AD DS role manually.

What tool can you use to accomplish this task?

Choose the correct answer

- ☐ Active Directory Administrative Center
- ☐ Dcpromo.exe
- ☒ Server Manager
- ☐ Active Directory Domains and Trusts

Your network contains computers in different physical network locations that use IPv4 and IPv6. Each location has a firewall that performs Network Address Translation (NAT).

All the computers are running Microsoft Windows Server 2012 R2 or Microsoft Windows 8.1.

You need the computers to be able to communicate with each other.

What should you do?

Choose the correct answer



Configure the firewall to allow Teredo.



Configure a link local IPv6 address on the internal interface of the firewall.



Configure a global IPv6 address on the external interface of the firewall.



Configure the Network Address Translation (NAT) for port mapping.

You manage a domain controller named DC1 that runs a full installation of Microsoft Windows Server 2012 R2. You need to reduce the storage space required by the operating system by as much as possible.

What feature needs to be removed to accomplish this task?

Choose the correct answer

☒ Server-Gui-Mgmt-Infra

☐ Server-Gui-Shell

☐ WoW64-Support





☐ Desktop-Experience

Your network is configured as a single subnet connected to the Internet through a router running Microsoft Windows Server 2012 R2. All client computers receive their IP addresses from one Dynamic Host Configuration Protocol (DHCP) server running Windows Server 2012 R2. The DHCP server is deployed locally on the subnet.

You need to ensure that network clients will be able to lease IP addresses, even if the DHCP server fails or is unavailable for some reason.

What should you do?

Choose the correct answer

- ☐  Configure the router as a DHCP relay agent.
- ☐  On the subnet install an additional DHCP server configured with the same scope.
- ☒  On the subnet install an additional DHCP server, and configure the new DHCP server as a failover server.
- ☐  Configure the DHCP server with a superscope.

You are an administrator for an Active Directory Domain Services (AD DS) domain. You are troubleshooting an application problem on a member server running Microsoft Windows Server 2012 R2. You need to temporarily disable User Account Control (UAC) on the server.

What should you use?

Choose the correct answer



Scwcmd



Local Security Policy Editor



Group Policy Editor



Secedt

You manage a server named Server1 that runs Microsoft Windows Server 2012 R2 with the Hyper-V role installed. A Virtual Machine (VM) named VM1 runs on Server1. VM1 is configured to use dynamic memory.

You created a second VM named VM2. You attempt to start VM2 and receive following error:

An error occurred while attempting to start the selected virtual machine(s).
'VM2' could not initialize.

Not enough memory in the system to start the virtual machine VM2.

You notice that VM1 is using all available memory on the Server1.

You need to start VM2. You need to minimize downtime of VM1.

What should you do?

Choose the correct answer



Suspend VM1, decrease Maximum RAM value for VM1, and resume VM1.



Shut down VM1, decrease Maximum RAM value for VM1, and start VM1.



Enable Smart Paging for VM2.



Enable Smart Paging for VM1.

You manage a server named Server1 that runs Microsoft Windows Server 2012 R2 with the DNS Server role installed.

You need to configure a DNS server to ensure that Server1 will only respond to DNS queries from computers that are located on the same subnet with Server1.

What should you do?

Choose the correct answer

- ☐ Configure DNS Service binding to the network interfaces
- ☐ Configure IPSEC
- ☒ Configure Windows Firewall
- ☐ Configure DNSSEC

You need to update a Microsoft Windows Server 2012 R2 offline installation image. You are going to remove features that are not needed in the installations for which it will be used. You are going to run DISM from a server running Windows Server 2012 R2 to update the image. The image is stored in a repository located on a network file server.

What should you do first?

Choose the correct answer

- ☐ Run sfc.
 - ☒ Copy the image to the local server.
 - ☐ Mount the image.
 - ☐ Boot the image.
-

You manage an Active Directory Domain Services (AD DS) domain. The domain functional level is Windows Server 2012 R2. You want to install an additional domain controller by using Windows PowerShell.

What should you do?

Choose the correct answer

- ☐ Run the Install-ADDSDomain cmdlet.
- ☒ Run the Install-ADDSDomainController PowerShell cmdlet.
- ☐ Run the Install-ADDSTForest cmdlet.
- ☐ Run the Add-ADDSTReadOnlyDomainControllerAccount cmdlet.

You need to activate a Microsoft Windows Server 2012 R2 Server Core installation.

What command should you use?

Choose the correct answer

- ☐ Cscript slmgr.vbs /act-type
- ☐ Set-WindowsProductKey cmdlet
- ☒ Cscript slmgr.vbs /ato
- ☐ Sconfig

Your network includes a server running Microsoft Windows Server 2012 configured as a Dynamic Host Configuration Protocol (DHCP) server. The server is the only DHCP server in your network. The network is configured as a single subnet.

Your company has recently purchased 100 new computers. They are all running Microsoft Windows 8.1. They need to be assigned IP addresses from the DHCP server. However, they need to be assigned a different Domain Name System (DNS) server than all the other computers in your network.

The Media Access Control (MAC) address on all the new computers start with 00-15. None of the old computers have MAC addresses starting with 00-15. You need to configure the correct IP address settings on the new computers using the least amount of administrative effort.

What should you do?

Choose the correct answer

- ☒ Configure the 100 new computers with a DHCP assigned IP address, but configure the DNS server address statically.
- ☐ Create a new scope on the DHCP server to distribute IP addresses to the new computers.
- ☐ Configure reservations for the MAC addresses starting with 00-15.
- ☒ Configure a policy for the MAC addresses starting with 00-15.

SRV1 runs Microsoft Windows Server 2012 R2. SRV1 has four network adapters. Two network adapters are connected to Switch1. The other two network adapters are connected to Switch2.

You need to ensure that traffic is aggregated across the four network adapters. Your solution should provide the best possible traffic distribution.

Which two configurations options should you choose? (Each correct answer presents part of the solution. Choose two.)

Choose the correct answers

- ☐ Switch-dependent mode
- ☒ Switch-independent mode
- ☐ SR-IOV
- ☐ TCP Chimney Offload
- ☒ Hashing mode
- ☐ RDMA
- ☐ Broadcast mode

You manage an Active Directory Domain Services (AD DS) domain. Domain controllers run Microsoft Windows Server 2012 R2.

In the past, there have been problems with Active Directory organizational units (OUs) being accidentally deleted. You need to ensure that this does not happen in the future.

Which two tools can you use? (Each correct answer presents a complete solution. Choose two.)

Choose the correct answers



`dsmod ou`



`Get-ADOrganizationalUnit` cmdlet



Ntdsutil



Active Directory Users and Computers



`Set-ADOrganizationalUnit` cmdlet

You are an administrator for an Active Directory Domain Services (AD DS) domain. The domain includes several member servers running various versions of Windows Server. You are directed to find member servers that will support in-place upgrades directly to Windows Server 2012 R2 Standard.

Which servers can be upgraded? (Each correct answer presents part of the solution. Choose three.)

Choose the correct answers

- ☒ Windows Web Server 2008
- ☒ Windows Web Server 2008 R2 with SP1
- ☒ Windows Server 2008 Enterprise
- ☒ Windows Server 2008 Datacenter
- ☒ Windows Server 2012 Datacenter
- ☒ Windows Server 2012 Standard
- ☒ Windows Server 2008 R2 Enterprise with SP1
- ☒ Windows Server 2008 R2 Datacenter with SP1

You need to install an additional role on a remote computer named RemServ23 running Windows Server 2012 R2. You need to run the installation from a local computer named ManComp also running Windows Server 2012 R2.

What should you run first? (Each correct answer presents a complete solution. Choose two.)

Choose the correct answers

- ☒ Connect-PSSession
- ☒ New-PSSession
- ☒ Enter-PSSession
- ☐ New-PSSessionOption
- ☒ Enable-PSRemoting

AppSrv is an application server that is running Windows Server 2012 R2. It has the storage configuration shown in the exhibit.

The application on AppSrv requires a 200 MB volume for temporary files. The application performs a lot of disk I/O to this location. The application currently uses volume D as the temporary file location.

You need to optimize the performance of AppSrv.

Select the steps you will take. Place your selections in the order in which you should perform them.

Create a list in the correct order

Possible Steps

Delete volume D

Create volume F as a spanned volume

Move the temporary file location to volume E

Convert volume D to ReFS

Steps to Take in Order

Convert Disk 1 to a dynamic disk

Create volume F as a stripe set

Move the temporary file location to volume F



You install Microsoft Windows Server 2012 R2 on a server named Server1 that is residing in a DMZ. You configure the server with the default configuration.

You need to ensure that you will be able to use Remote Management by using PowerShell.

What port needs to be open on the firewall?

Choose the correct answer

☒ 445

☒ 135

☒ 3269

☒ 5985

You manage an Active Directory Domain Services (AD DS) domain. Domain controllers run Microsoft Windows Server 2012 R2.

You need to configure an AppLocker rule for each application that is under the c:\program files directory and all subdirectories. You should keep the administrative effort required to accomplish this to a minimum.

What should you do? (More than one answer choice may be correct. Choose the BEST answer.)

Choose the correct answer



Run the Automatically Generate Rules Wizard.



Use the Create New Rule Wizard to create a separate Publisher rule for each .exe file.



Use the Create New Rule Wizard to create a separate Path rule for each .exe file.



Use the Create New Rule Wizard to create a separate File Hash rule for each .exe file.

A server running Windows Server 2012 R2 is configured with the Hyper-V role. A virtual machine is running a Server Core installation of Windows Server 2012 R2 and is running the Web server role. It is configured with a fixed disk VHD that is at 70% utilization. You determine that several optional features are available to be enabled, but are not needed to support the role.

You need to reduce the amount of storage capacity required for the .VHD file by as much as possible. Your solution should minimize the amount of time the VHD is unavailable.

What should you do?

Choose the correct answer



Take the VHD offline and run `Uninstall-WindowsFeature` with the `-Remove` option for unneeded features.



Convert the VHD file to VHDX and use Hyper-V Manager on the host operating system to shrink the VHD file.



Use Hyper-V Manager on the host operating system to shrink the VHD file.



Run `Uninstall-WindowsFeature` for unneeded features.

You manage a server named Server1 that runs Microsoft Windows Server 2012 R2 with the Hyper-V role installed. A Virtual Machine (VM) named VM1 that also runs Windows Server 2012 R2 is hosted on Server1.

You need to measure how much IPv4 traffic VM1 receives from the specific subnet.

What should you do?

Choose the correct answer

- ☐ Configure Windows Firewall rules on Server1.
 - ☒ On Server1, create an ACL for VM1 network adapter.
 - ☐ On Server1, create an ACL for a virtual switch.
 - ☐ Configure Windows Firewall rules on VM1.
-

You manage a server named Server1 that runs Microsoft Windows Server 2012 R2 with the Hyper-V role installed. You are planning to run a virtual machine (VM) named VM1 on Server1.

You need to recommend a network configuration for VM1. You will be creating a virtual switch that will be assigned to VM1. The solution should meet these requirements:

- * VM1 should support live migration.
- * Network operations for VM1 should consume the least amount of CPU cycles as possible on Server1.

What should you recommend?

Choose the correct answer



Enable the Windows Filtering Platform (WFP) extension on the virtual switch.



Disable the Windows Filtering Platform (WFP) extension on the virtual switch.



Create the virtual switch with SR-IOV enabled.



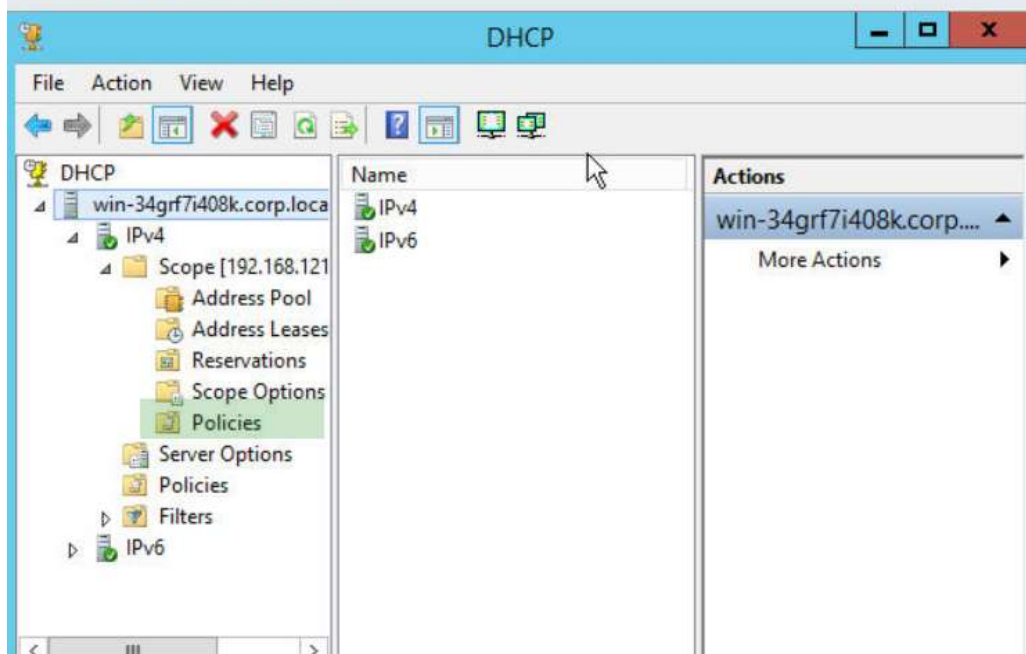
Create the virtual switch with SR-IOV disabled.

A server running Microsoft Windows Server 2012 R2 is supporting the Dynamic Host Configuration Protocol (DHCP) server role. The server is configured as shown in the exhibit.

You need to subdivide the scope so that part of the addresses in the scope are assigned to desktop computers, part to smart devices, and other addresses are assigned to virtual machines (VMs). Administrative effort to accomplish this should be kept to a minimum.

Where should you click to configure this option?

Select the correct area



A company has the computers shown in the exhibit.

You need to deploy the DHCP role on Server3. You are located at SiteA.

Which two options are supported? (Each correct answer presents a complete solution. Choose two.)

Choose the correct answers

- ☒ Use Server Manager on Server1
- ☐ Use Server Manager on Server2.
- ☐ Run Install-WindowsFeature on ClientB.
- ☒ Run Install-WindowsFeature on ClientA.
- ☐ Configure a Software Installation policy on DC1.
- ☐ Use Server Manager on DC1.

You manage an Active Directory Domain Services (AD DS) domain. Domain controllers run Microsoft Windows Server 2012 R2.

A user has reported that when attempting to log on to a workstation, she received the error message "Your account is configured to prevent you from using this computer." You need to configure the user account to allow the user to log on to the workstation in question.

Which PowerShell cmdlet should you use?

Choose the correct answer

- ☒ Enable-ADAccount
- ☒ Set-ADAccountExpiration
- ☒ Unlock-ADAccount
- ☒ Set-ADUser
- ☒ Set-ADAccountPassword
- ☒ Disable-ADAccount
- ☒ Clear-ADAccountExpiration

You manage two servers named Server1 and Server2. Both servers run Microsoft Windows Server 2012 R2 with the Hyper-V role installed. A virtual machine (VM) named VM1 that runs Microsoft Windows Server 2012 is hosted on Server1.

You used Quick Migration to migrate VM1 to Server2. After the migration, you noticed that the Network Adapter of VM1 was disconnected. The issue was resolved after a VM1 restart.

What can you do to prevent this issue in the future?

Choose the correct answer

- ☒ Configure a Static MAC address for VM1.
- ☐ Enable MAC address spoofing for VM1.
- ☐ Enable the DHCP Guard option for VM1 network adapter.
- ☐ Disable the DHCP Guard option for VM1 network adapter.

A computer running Microsoft Windows Server 2012 R2 is used as a file server named File1.

The file server includes a shared folder named OfficeFiles, which is used for storing interoffice-related documents.

One of your users complains that he is unable to access a folder named SalesOffice, which resides in the OfficeFiles folder. He uses the mapped drive \\File1\OfficeFiles\SalesOffice to get to the folder. You determine that the user does not have permissions to the OfficeFiles folder.

You need to enable his access to the mapped drive without granting excessive permissions to the OfficeFiles folder.

What should you do?

Choose the correct answer



You should grant the user the Traverse folder permission on the OfficeFiles folder.



You should grant the user the List folder permission on the OfficeFiles folder.



You should grant the user the Full control permission on the SalesOffice folder.



You should grant the user the Traverse folder permission on the SalesOffice folder.



You should grant the user the Read permission on the OfficeFiles folder.

You are managing an Active Directory Domain Services (AD DS) domain named example.com. The domain is running at the Windows Server 2008 R2 functional level. All domain controllers are running Microsoft Windows Server 2012 or Windows Server 2012 R2.

You need to create a template that will be used to create new user accounts. You need to perform this task by using PowerShell.

What PowerShell cmdlet should you use first?

Choose the correct answer

- ☒ Enable-ADOptionalFeature
- ☐ New-ADServiceAccount
- ☐ Install-ADServiceAccount
- ☒ New-ADUser

You are managing an Active Directory forest that has three domains: example.com, corp.example.com, and europe.example.com. All domain controllers are running Microsoft Windows Server 2012 R2.

The EuroSales group is a domain local group located in the europe.example.com domain.

You need to ensure that the EuroSales group can only include members from the same domain.

What tool can be used to accomplish this task?

Choose the correct answer

☐ Dsmgmt

☐ Dsacis

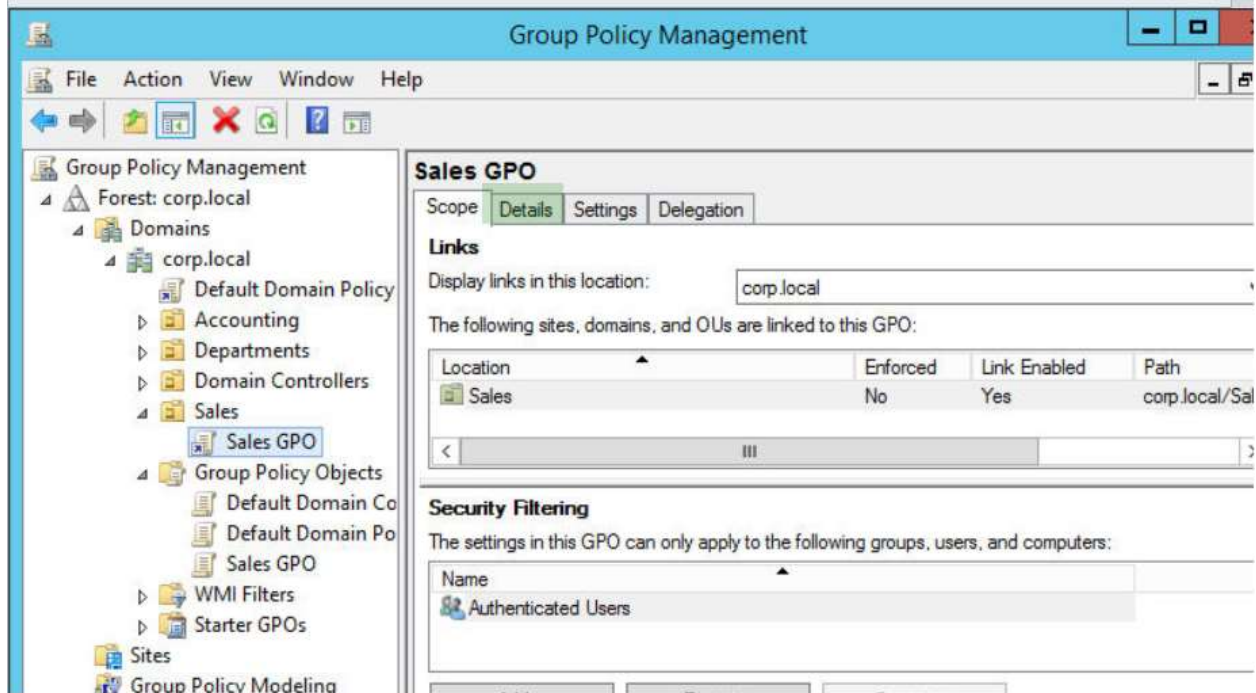
☐ Dsamain

☒ Dsmod

You are an administrator for an Active Directory Domain Services (AD DS) domain named corp.local. You create a Group Policy object (GPO) named Sales GPO that is linked to the Sales organizational unit (OU). You want to disable the computer configuration settings in the GPO to help improve logon times for users.

Click to identify where you need to modify the GPO configuration to disable computer configuration settings.

Select the correct area



You are an administrator for an Active Directory Domain Services (AD DS) domain. A portion of your network is shown in the exhibit. All of the servers shown run Microsoft Windows Server 2012 R2. Serv1 is configured as a Dynamic Host Configuration Protocol (DHCP) server. Serv1 has scopes to support SubnetA and SubnetB.

Router1 is unable to forward DHCP requests, so clients in SubnetB are not able to lease IPv6 addresses from Serv1. You need to ensure that clients in SubnetB can lease IPv6 addresses.

What should you do?

Choose the correct answer

- ☐ ✓ Configure Serv1 as a DHCP Relay Agent.
- ☐ ✓ Move Serv1 to SubnetB.
- ☒ ✓ Configure Member2 as a DHCP Relay Agent.
- ☐ ✓ Configure Member1 as a DHCP Relay Agent.

You manage a file server running Microsoft Windows Server 2012 R2. Recent security violations have necessitated that you configure additional auditing settings.

You need to track the exact permissions that were used when a user accesses a shared folder.

What should you do?

Choose the correct answer



Using Advanced Security Audit Policy Settings for Object Access, Audit File Share.



Using Advanced Security Audit Policy Settings for Object Access, Audit Kernel Object.



Using Advanced Security Audit Policy Settings for Object Access, Audit Other Object Access Events.



Using Advanced Security Audit Policy Settings for Object Access, Audit Detailed File Share.

You manage a server named Server1 that runs Microsoft Windows Server 2012 R2 with the Hyper-V role installed.

You are planning to configure a Virtual Machine (VM) named VM1 that will run Microsoft Windows Server 2012 R2.

You need to ensure that the virtual machine can be restored if the virtual hard disk fails or becomes corrupted. Your solution should minimize downtime.

What should you do?

Choose the correct answer

- ☐ Configure VM1 to use a virtual hard disk in VHDX format.
 - ☒ Enable the Volume Shadow Copy Service (VSS) on all drives used by VM1.
 - ☐ Install Integration Service.
 - ☐ Configure virtual machine snapshots.
-

You configure a computer running Microsoft Windows Server 2012 R2 as a print server. You add three printers to the print server. The printers are named office1, office2, and office3. Each printer is configured with its own print driver.

Users in your domain explain that the printers stop responding sometimes. After investigating the situation, you discover that the problem is a faulty driver for the office3 printer. The faulty driver causes all the printers to stop responding.

You need to solve the problem without removing any of the printers.

What should you do?

Choose the correct answer

- ☒ In Print Management on the print server, create a new custom filter for the office1 and office2 printer.
- ☐ In Device Manager on the print server, use Device Driver Roll Back to roll back the driver for the office3 printer.
- ☐ In Print Management on the print server, configure the office1 and office2 printer with a higher priority than the office 3 printer.
- ☒ In Print Management on the print server, configure driver isolation for the printer.

You are preparing an offline image of Microsoft Windows Server 2012 R2 for Remote Desktop Services. You enabled the Desktop Experience feature, but you need to remove Windows Media Player from the image.

What command should you use?

Choose the correct answer

- ☐ DISM.exe with the /Disable-Feature parameter
- ☐ Remove-WindowsPackage cmdlet
- ☒ Disable-WindowsOptionalFeature cmdlet.
- ☐ DISM.exe with the /Remove-Package parameter
- ☐ Uninstall-WindowsFeature cmdlet

You are the administrator for an Active Directory Domain Services (AD DS) domain named corp.local. The domain includes multiple Domain Name System (DNS) servers running Windows Server 2012 R2.

You are responsible for managing all the DNS servers in the domain, which includes monitoring the event log and installing roles and features. You want to minimize the effort necessary to manage the DNS servers.

What should you do?

Choose the correct answer



Create a Remote Desktop Protocol (RDP) session to every Domain Name System (DNS) server.



In Server Manager, create a server group and add all the Domain Name System (DNS) servers to the group.



Use remote PowerShell commands to accomplish the task.



Create a custom Microsoft Management Console (MMC) and add all the Domain Name System (DNS) servers to the custom Microsoft Management Console (MMC).

You are configuring a failover cluster. Each server in the cluster is running Windows Server 2012 R2. There will be six virtual machines running on the cluster. You need to configure storage to meet the following requirements:

- * The configuration must allow servers to continue functioning if any two disks fail simultaneously.
- * Each virtual machine should be able to failover independently.
- * Configuration and management of the virtual hard drives should be simplified.
- * Storage capacity utilization should be optimized.

Place the correct configuration under the appropriate configuration option.

Drag and drop the answers

Configurations

Three
Four
Five
Six
NTFS

Configuration Options

^	Minimum number of disks
Five	X
^	File system
NTFS	X
^	Provisioning type



ReFS

Fixed

Thin

Simple

Two-way mirror

Three-way mirror

Parity

Fixed

^ Resiliency type

Three-way mirror

You manage a server named Server1 that runs Microsoft Windows Server 2012 R2 with the Hyper-V role installed.

You are planning to deploy 20 new Virtual Machines (VMs) running Windows 8 on Server1. The virtual machines will be used for application testing purposes. Storage space on Server1 is limited and you need to deploy VMs using the minimum possible disk space.

How should you configure storage for the virtual machines?

Choose the correct answer



Use 1 dynamic VHD and 20 differencing VHDs.



Use 20 dynamic VHDs.



Use 1 fixed VHD in read-only mode.



Use 1 fixed VHD and 20 dynamic VHDs.

You are configuring a server running Windows Server 2012 R2 to use Storage Spaces to provision capacity to two different applications: a data warehousing application and a mission critical application. There are five drives in the pool.

The data warehousing application has capacity requirements that vary widely from week to week. The data must be protected against the failure of any one drive. The application requires optimal read and write access to the data.

The mission critical application starts each year with minimal capacity requirements. The capacity requirements grow throughout the year. The mission critical application must be able to access data even if two disks fail. If a disk fails, the data must be rebuilt to a different storage device as quickly as possible.

You need to configure the server to meet the requirements. Your solution should optimize capacity utilization.

Which two steps should you take? (Choose two.)

Choose the correct answers

- ☒ Create a four column two-way mirror space that uses fixed provisioning and includes a hot spare.
- ☒ Configure one disk in the pool as a hot spare.
- ☒ Create a one-column three-way mirror space that uses thin provisioning and includes a hot spare.
- ☒ Configure a two-column two-way mirror space that uses thin provisioning.
- ☒ Create a one-column three-way mirror space that uses fixed provisioning.

You manage an Active Directory Domain Services (AD DS) forest that includes three domains. Domain controllers run Microsoft Windows Server 2012 R2. The Accounting group is a global security group in the corp.meddev.com domain. The group does not have any members. You need to add users from the branch.meddev.com domain to the Accounting group.

Which tool should you use first?

Choose the correct answer

- ☐ Set-ADUser
- ☐ Add-ADGroupMember
- ☐ Active Directory Domains and Trusts
- ☒ Set-ADGroup
- ☐ Dsmod user

You are managing one Active Directory Domain Services (AD DS) domain named example.com. All domain controllers are running Microsoft Windows Server 2012 R2. All accounts for domain users are located in the Company Users Organizational Unit (OU).

You need to prevent this OU from accidental deletion.

What should you do?

Choose the correct answer

- ☐ Remove Allow Delete and Allow Delete Subtree permissions from the Everyone group on the OU.
- ☐ Enable the Active Directory Recycle Bin feature.
- ☒ Add Deny Delete and Deny Delete Subtree permissions to the Everyone group on the OU.
- ☐ Set the isSystemCriticalObject attribute of the OU to true.

You manage a server named Server1 that runs Microsoft Windows Server 2012 R2 with the Hyper-V role installed.

You are planning to implement a storage migration for Virtual Machines (VMs) running on Server1. VMs on Server1 run Microsoft Windows Server 2008 R2.

How should you configure storage for the virtual machines?

Choose the correct answer



Use virtual disks in .VHD format.



Use virtual disks in .VFD format.



Configure DFS Replication (DFS-R) for a folder with virtual disks.



Configure pass-through disks.

Your company is implementing a Bring-Your-Own-Device (BYOD) policy. The company network is an Active Directory Domain with an Enterprise CA.

You need to ensure that users can synchronize files between their desktop and laptop computer and their mobile devices. The desktop and laptop computers are running Windows 8.1.

You install the services shown in the exhibit on a domain member named FileSrv, which is running Windows Server 2012 R2.

You need to ensure that certificates are properly configured.

What should you do?

Choose the correct answer

- ☐ Run the IIS management console on FileSrv.
- ☒ Run netsh on FileSrv.
- ☐ Configure a certificate template and publish it to Active Directory.
- ☐ Run netsh on each client computer.

You are the administrator for an Active Directory Domain Services (AD DS) domain named corp.local. The domain includes several file and print servers all running Microsoft Windows Server 2012 R2.

You want to be able to manage all the servers from one single location. To accomplish this goal, you need to enable Windows Remote Management on all the servers and use the Server Manager to manage all servers.

Which tools can you use? (Each correct answer presents a complete solution. Choose two.)

Choose the correct answers



Server Manager



net session command



winrm quickconfig



Configure-SMRemoting.exe



netsh.exe -firewall

You manage an Active Directory Domain Services (AD DS) domain named example.com. Domain controllers run Microsoft Windows Server 2012 R2.

New computer accounts are created in the default Computers container. You would like all newly-added computer accounts to be created in the Equipment OU.

What should you do?

Choose the correct answer

- ☒ Run Set-ADOrganizationalUnit and specify the Equipment OU.
- ☒ Run redirusr.exe and specify the Equipment OU.
- ☒ Run redircmp.exe and specify the Equipment OU.
- ☒ Run Dsmode OU and specify the Equipment OU.

You are testing a new version of a service named LoadInvoice on a computer running Microsoft Windows Server 2012 R2 Server Core. The service is configured to start automatically when the computer starts.

The service is interfering with network communications. You need to prevent the service from starting when you restart the computer.

What should you do? (Each correct answer presents a complete solution. Choose two.)

Choose the correct answers

- ☒ Use the Suspend-Service cmdlet.
- ☒ Use the New-Service cmdlet.
- ☒ Use the scconfig command.
- ☒ Use the sc command.
- ☒ Use the Set-Service cmdlet.

You are an administrator for an Active Directory Domain Services (AD DS) domain. The domain is at the Windows Server 2012 R2 domain functional level.

Your company has acquired another company. You are tasked with integrating the new company's users and computers into your current domain. You have a Microsoft Excel spreadsheet containing the information needed to create the user accounts. You need to create these accounts as quickly as possible.

What should you use?

Choose the correct answer



Csvde



Dsadd



Active Directory Users and Computers



New-ADUser

You are migrating your network devices from IPv4 to IPv6 addressing. You need to configure IPv6 addresses to replace public IPv4 addresses.

Which IPv6 address prefix is appropriate for this use?

Choose the correct answer

☐ FE80::

☐ FC00::

☒ 2000::

☐ FD00::

You manage a server named TestHost that runs Microsoft Windows Server 2012 R2 with the Hyper-V role installed. You are creating multiple Generation 2 virtual machines (VMs) as a test network for software development. These will be the only VMs on the host. You need to ensure that the VMs can communicate with each other and with the host computer, but not the network.

What should you do?

Choose the correct answer

- ☐ Configure the VMs to use legacy network adapters.
- ☒ Create an internal virtual switch.
- ☐ Create an external virtual switch.
- ☐ Create a private virtual switch.
- ☐ Configure the VMs to use synthetic network adapters.

A server running Windows Server 2012 R2 has three network adapters. You need to ensure that bandwidth is aggregated across the network adapters. Your solution should also ensure that if any one network adapter fails, the other two network adapters will continue to service traffic.

What cmdlet do you need to run first?

Choose the correct answer

- ☐ Add-NetLbfoTeamNic
- ☐ Add-NlbClusterVip
- ☐ New-NlbCluster
- ☒ New-NetLbfoTeam

You are planning to set up a remote feature file shared folder that will be used as a side-by-side feature store for Windows Server 2012 R2 installations in your environment.

You created a network file share named `\\Fileserver1\share\sxs` and assigned file and share permissions to the file share.

What should you do next?

Choose the correct answer

- ☐ Copy the Sources\install.wim file from your Windows Server 2012 R2 installation media to the shared folder.
- ☐ Copy the Sources\dlmanifests folder from your Windows Server 2012 R2 installation media to the shared folder.
- ☐ Extract contents of the Sources\install.wim file from your Windows Server 2012 R2 installation media to the shared folder by using ImageX command-line tool.
- ☒ Copy the Sources\SxS folder from your Windows Server 2012 R2 installation media to the shared folder.

Host1 is a computer running Microsoft Windows 2012 R2 with the Hyper-V role installed. You created an external network virtual switch configured to support NIC teaming when you installed the Hyper-V role. Host1 includes eight network adapters configured for NIC teaming.

You create a Generation1 virtual machine (VM) named VM1 with two virtual network adapters configured for NIC teaming. Performance when communicating with the physical network does not meet your requirements, so you add two virtual adapters for NIC teaming. Performance does not improve.

What is the most likely reason?

Choose the correct answer

- ☐ The Set-VMNetworkAdapter cmdlet has not been run for the virtual switch.
- ☐ TCP Chimney Offload is configured on the physical adapters.
- ☐ A private network virtual switch has not been created.
- ☒ A maximum of two adapters is supported for virtual NIC teaming.

You are installing Windows Server 2012 R2 on a new server. The server must meet the following requirements:

- * Ability to manage the server locally by using PowerShell
- * Ability to manage the server locally by using Server Manager
- * Internet Explorer should not be installed on the server
- * Storage capacity consumption should be reduced.

What should you do?

Choose the correct answer



Install Windows Server 2012 R2 with the Server Core installation option.



Install Windows Server 2012 R2 with the Server with a GUI installation option and then run `Uninstall-WindowsFeature Server-Gui-Shell -Remove`.



Install Windows Server 2012 R2 with the Server with a GUI installation option.



Install Windows Server 2012 R2 with the Server with a GUI installation option and then run `Uninstall-WindowsFeature Desktop-Experience`.

You are managing an Active Directory Domain Services (AD DS) domain named example.com. The domain is running at the Windows Server 2008 R2 functional level. All domain controllers are running Microsoft Windows Server 2012 or Windows Server 2012 R2.

The company has a number of users who telecommute. You are preparing laptop computers that will be installed using an unattended installation script. The computers will connect to the company's VPN, but they must first be configured as members of the domain. You need to allow computers to join a domain without contacting a domain controller over the network.

What should you do first?

Choose the correct answer

- ☒ Run the `djoin /requestodj` command.
- ☒ Configure Active Directory Certificate Services (AD CS).
- ☒ Raise the domain functional level to Windows Server 2012.
- ☒ Run the `djoin /provision` command.

You manage a server named Server1 that runs Microsoft Windows Server 2012 R2 Server Core.

Server1 hosts a custom billing application that uses a custom local service named BillingService. The application administrator explains that BillingService is failing to start after the server restarts. During the troubleshooting, you discover that the BillingService application requires the COM+ System Application service to be started in advance.

You need to ensure that BillingService can start when the server restarts.

What tool can you use to accomplish this task?

Choose the correct answer

☐ Set-Service cmdlet

☒ Sc.exe

☐ Services.msc

☐ Net.exe

You are an administrator for an Active Directory Domain Services (AD DS) domain. RSumner is a domain user account belonging to a department manager. The account has the permissions and group memberships necessary for the user to perform managerial functions for the Accounting department.

The account's user is fired suddenly. A new manager will be appointed in the position as soon as possible and will need the same permissions and memberships. You need to make sure the account cannot be used to log onto the domain in the interim.

What should you do?

Choose the correct answer

- ☐ Rename the account.
- ☐ Delete the account.
- ☐ Lock the account.
- ☒ Disable the account.

You are the administrator of several computers running Microsoft Windows Server 2012 R2.

Your Chief Information Officer (CIO) has raised concerns that the attack surface on a computer running a full Graphical User Interface (GUI) and with all the management tools installed poses too great a risk.

You need to remove the GUI from the servers with the least amount of administrative effort.

What should you do?

Choose the correct answer

- ☐ Use the SConfig command to remove the GUI from the servers.
- ☐ Uninstall the server and reinstall it as a Server Core version of Microsoft Windows Server 2012.
- ☐ Run `Remove-WindowsFeature Server-Gui-Shell, Server-Gui-Mgmt-Infra`.
- ☒ Run `Uninstall-WindowsFeature Server-Gui-Mgmt-Infra -Restart`.

You have a computer running Microsoft Windows Server 2012 R2.

You log on to the server so you can create a shared folder.

What two tools can you use to create the shared folder? (Each correct answer presents a complete solution. Choose two.)

Choose the correct answers



Netdom



Net share



File and Storage Services



Net view



Net use

Srv1 is running a Server Core installation of Windows Server 2008 and the Hyper-V role. There are six virtual machines running on Srv1.

You need to migrate the virtual machines to Srv2, which is running a full installation of Windows Server 2012 R2.

What should you do first?

Choose the correct answer

- ☐ Convert Srv2 to a Server Core installation.
- ☐ Convert Srv1 to a full installation.
- ☒ Upgrade Srv1 to Windows Server 2008 R2.
- ☐ Run Export-SmigServerSetting on Srv1.

You manage an Active Directory Domain Services (AD DS) domain. Domain controllers run Microsoft Windows Server 2012 R2. The password policy and the account lockout policy shown in the exhibit are applied throughout the domain.

A user informs you that he cannot log in. He had mistyped his password four times.

Which PowerShell cmdlet should you use?

Choose the correct answer

- ☒ Clear-ADAccountExpiration
- ☒ Disable-ADAccount
- ☒ Set-ADAccountExpiration
- ☒ Unlock-ADAccount
- ☒ Set-ADAccountPassword
- ☒ Enable-ADAccount
- ☒ Set-ADUser

You use the Server Manager Add Roles and Features Wizard to create an .xml configuration file. You want to use this file to configure multiple computers running Microsoft Windows Server 2012 R2.

What should you use to apply the configuration?

Choose the correct answer

- ☐ Sc config
- ☐ Import-Clixml cmdlet
- ☒ Install-WindowsFeature cmdlet
- ☐ Server Manager

You are managing an Active Directory Domain Services (AD DS) domain named example.com. The domain is running at the Microsoft Windows Server 2012 R2 functional level.

You have previously created a custom Starter Group Policy object (GPO) with a list of trusted sites for Internet Explorer.

You create GPOs named GPO1 and GPO2 based on the Starter GPO. You plan to link GPO1 to three organizational units (OUs) and GPO2 to four OUs. All OUs contain users who are members of the Sales group, as well as users who are not members of the Sales group.

You need to ensure that new GPOs will be applied only to the members of the Sales domain group. Your solution should require the least amount of effort.

What should you do?

Choose the correct answer

- ☐ Configure security on the Delegation tab of the Starter GPO.
- ☒ Configure security on the Delegation tab of GPO1 and GPO2.
- ☐ Create a new WMI filter.
- ☐ Change security permissions on the Delegation tab of the Starter GPO folder.

You manage a server named Server1 that runs Microsoft Windows Server 2012 R2 with the Hyper-V role installed. The server hosts multiple virtual machines (VMs), including a VM named VM1.

You need to list all snapshots of VM1.

What command do you need to run?

Choose the correct answer

- ☐ Get-VMSnapshot -ChildOf VM1
- ☐ Get-VMSnapshot -VM VM1
- ☐ Get-VMSnapshot -Name VM1
- ☒ Get-VMSnapshot -VMName VM1

You are planning to decommission Server1. Server1 is the last WINS server in the network.

You need to ensure that clients can resolve the names of servers in the network by using the host name without a domain name.

Which command should you use first?

Choose the correct answer

- ☐ Add-DnsServerResourceRecordDS
 - ☐ Add-DnsServerForwarder
 - ☐ Add-DnsServerResourceRecord
 - ☒ Add-DnsServerPrimaryZone
-

You are an administrator for an Active Directory Domain Services (AD DS) domain. All domain controllers run Microsoft Windows Server 2012 or Windows Server 2012 R2.

You create an AppLocker policy as part of a local security policy and export the policy as an XML file. You want to import this policy and merge it with the existing AppLocker policy in the default domain Group Policy object (GPO).

Which PowerShell cmdlet should you use?

Choose the correct answer

- ☒ Copy-GPO
- ☒ Import-GPO
- ☒ Set-AppLockerPolicy
- ☒ New-AppLockerPolicy

A computer running Microsoft Windows Server 2012 R2 is being used as a file server. The physical folder d:\data is shared to the network as ShareData. The physical folder d:\data\references is shared to the network as ShareRef. Permissions are assigned to the Intern group as follows:

d:\data - All standard NTFS permissions denied
d:\data\references NTFS Read and Write permissions allowed
ShareData - Share Change permission allowed
ShareRef - Share Read permission allowed

What are the effective permissions granted the Intern group to these shares?

Choose the correct answer



ShareData - All access denied
ShareRef - Read access allowed



ShareData - All access denied
ShareRef - All access denied



ShareData - Change access allowed
ShareRef - Change access allowed



ShareData - Change access allowed
ShareRef - Read access allowed

You are adding a disk to a file server that runs Microsoft Windows Server 2012 R2 Server Core installation. You need to create a volume that is 3 TB.

To reduce the disk space usage, you need to enable Data Deduplication.

What should you do?

Choose the correct answer



Create a GUID Partition Table (GPT), and then create an NTFS partition.



Create a GUID Partition Table (GPT), and then create a Resilient File System (ReFS) partition.



Create a Master Boot Record (MBR) partition table, and then create a Resilient File System (ReFS) partition.



Create a Master Boot Record (MBR) partition table, and then create an NTFS partition.

You have a network running Microsoft Windows Server 2012 servers and a combination of Microsoft Windows XP (SP2), Windows 7 and Windows 8 client computers.

All of your users are connecting to a Remote Desktop Session Host server on your network. You are concerned that if they submit a print job while connected to the server, they will not be able to print to their local printer. You decide to use the Easy Print feature for Remote Desktop connections.

What are the minimum requirements for the client computers? (Choose two.)

Choose the correct answers



Remote Desktop Connection 6.1



Remote Desktop Connection 6.0



Microsoft .NET Framework 4.5



Microsoft .NET Framework 3.0 Service Pack 1



Microsoft .NET Framework 4.0

You configure a computer running Microsoft Windows Server 2012 as a file server. Your domain contains a Global Security group named Sales1. Sales1 contains all users from your sales department.

You share a folder from the file server. You grant the Everyone group Read permission. Then, you assign the Everyone group the Modify NTFS permission and the Sales1 group the Read NTFS permission.

Users in the sales department complain that they are unable to upload files to the shared folder. You need to change the permissions to allow users in the sales department to upload files to the shared folder without assigning excessive permissions to other users.

What should you do?

Choose the correct answer



Change the NTFS permissions for the Sales1 group to Read+Write.



Assign the Sales1 group the Change share permission.



Assign the Everyone group the Modify NTFS permission.



Assign the Everyone group the Change share permission.

You manage a server named Server1 that runs Microsoft Windows Server 2012 R2 with the Hyper-V role installed.

You are planning to create a virtual disk file for a new virtual machine (VM). You need to ensure that the new Virtual Disk will use 4096-byte sectors.

What command you should use?

Choose the correct answer



New-VHD -Path C:\disks\disk.vhdx -SizeBytes 10Gb -BlockSizeBytes 4096



New-VHD -Path C:\disks\disk.vhd -SizeBytes 10Gb
-PhysicalSectorSizeBytes 4096



New-VHD -Path C:\disks\disk.vhdx -SizeBytes 10Gb
-PhysicalSectorSizeBytes 4096



New-VHD -Path C:\disks\disk.vhd -SizeBytes 10Gb
-LogicalSectorSizeBytes 4096

You are planning to implement fault-tolerant, scalable storage on a server running Windows Server 2012 R2. Another administrator installs three 2 TB disks and creates a single MBR volume on each of them.

You need to configure storage using Storage Spaces. The current storage pool configuration is shown in the exhibit.

What should you do first?

Choose the correct answer

- ☒ Convert the volumes to GPT.
- ☒ Format the volumes with NTFS.
- ☒ Create a RAID 5 volume.
- ☒ Format the volumes with ReFS.
- ☒ Delete the volumes from the three disks.
- ☒ Create a new virtual disk.
- ☒ Create a new storage pool.

You configure a server running Microsoft Windows Server 2012 R2 as a print server.

You add three print devices to the print server on LPT ports 1, 2, and 3. On LPT ports 1 and 2, the print devices are of the same make and model. The print device on LPT port 3 is of a different model. Printer utilization is uneven because users do not know which printer has the shortest print queue. To the extent that you can, you want to optimize the use of the printers.

What should you do?

Choose the correct answer



Reconfigure the printers on the print server to enable print pooling for the printers on LPT port 1, 2 and 3.



Reconfigure the printers on the print server to enable print pooling for the printers on LPT port 1 and 2.



Change the printer priority on the printers on LPT ports 1 and 2 to 10.



Enable the "list in directory" option on the printers on LPT ports 1, 2, and 3.

You are managing an Active Directory Domain Services (AD DS) domain named example.com. All domain controllers are running Microsoft Windows Server 2012 R2.

You need to obtain a list of all members of a specific domain group including any members of nested groups.

What should you do?

Choose the correct answer

- ☒ Run the Get-ADGroupMember cmdlet with the -Recursive parameter.
- ☐ Run the Get-ADGroupMember cmdlet with the -Verbose parameter.
- ☐ Run the Get-ADGroup cmdlet with the -SearchScope parameter.
- ☐ Run the Get-ADGroup cmdlet with the -Verbose parameter.

You are configuring a computer running Microsoft Windows Server 2012 R2.

You are going to use a static IPv4 address with the computer. You need to configure the computer with a private IPv4 address.

Which addresses are private IPv4 addresses? (Choose all that apply.)

Choose the correct answers



12.240.128.5



10.128.10.10



8.8.8.8



192.168.15.17



193.128.17.3

You are managing an Active Directory Domain Services (AD DS) domain named example.com. The domain is running at the Microsoft Windows Server 2012 R2 functional level.

You previously created a custom Starter Group Policy object (GPO) with a list of trusted sites for Internet Explorer. You need to create a new GPO from this starter GPO and link it to the domain.

Which PowerShell cmdlets should you use? (Each correct answer presents part of the solution. Choose two.)

Choose the correct answers



Copy-GPO



New-GPO



New-GPLink



Restore-GPO



New-GPStarterGPO

You manage a server named Server1 that runs Microsoft Windows Server 2012 R2 with the Hyper-V role installed. A Virtual Machine (VM) named VM1 also runs Microsoft Windows Server 2012 R2 and is hosted on Server1.

You need to measure how much IPv4 traffic the VM1 receives from the specific subnet.

What should you do to ensure that network utilization data will be collected?

Choose the correct answer

- ☐ Ensure that VM1 is using SR-IOV.
- ☐ Ensure that VM1 is using TCP Offload.
- ☒ Ensure that VM1 is NOT using SR-IOV.
- ☐ Ensure that VM1 is NOT using TCP Offload.

You are managing an Active Directory Domain Services (AD DS) domain named example.com. The domain is running at the Microsoft Windows Server 2012 R2 functional level. You need to change the logon name for user EXAMPLE\JDoe to JSmith by using PowerShell.

What command you should use?

Choose the correct answer



Get-ADUser JDoe | Set-ADUser -SamAccountName JSmith



Get-ADUser JDoe | Rename-ADObject -NewName JSmith



Set-ADUser -Credential JDoe -SamAccountName JSmith



Rename-ADObject -Credential JDoe -NewName JSmith

You are managing one Active Directory Domain Services (AD DS) domain named example.com. All domain controllers are running Microsoft Windows Server 2012 R2. The file server running Windows Server R2 named Server1 is joined to the example.com domain.

Another administrator created a group named Sales in the BusinessGroups OU. When you try to assign the Sales group permissions to the Leads folder, the error shown in the exhibit is displayed.

You need to resolve the problem.

Which command should you use?

Choose the correct answer



`dsmod group -samID Sales -scope g`



`dsmod group "CN=Sales,OU=BusinessGroups,DC=example,DC=com" -secgrp yes`



`dsmod group -samID Sales -scope g -secgrp yes`



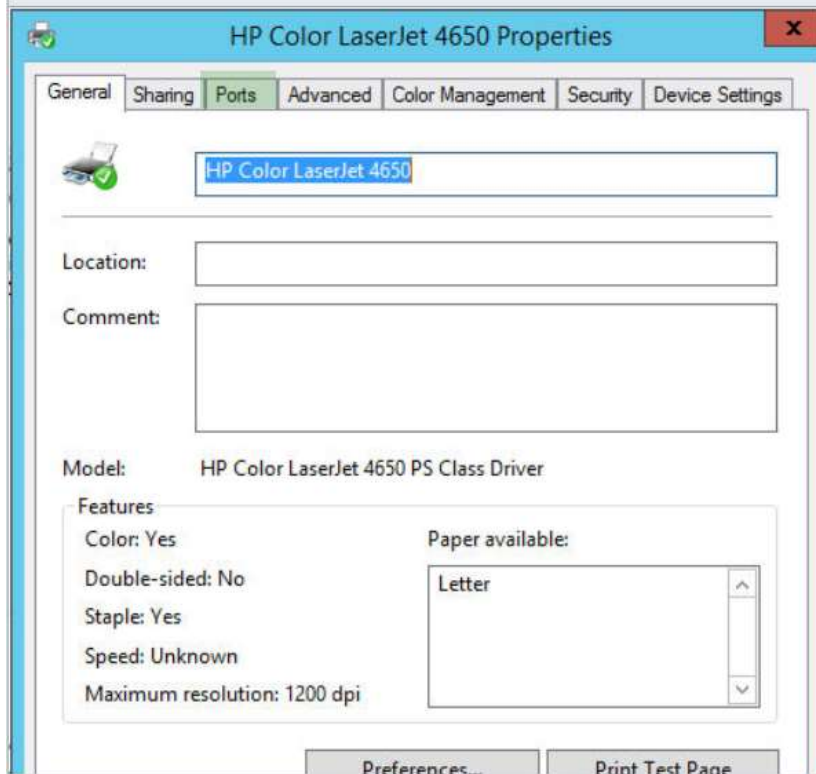
`dsmod group "CN=Sales,OU=BusinessGroups,DC=example,DC=com" -scope l`

A domain member server running Microsoft Windows Server 2012 R2 is configured as a print server. The printer properties for one of the printers on the server are shown in the exhibit.

You need to add the printer to a printer pool.

Where should you click to manage printer pooling?

Select the correct area



You manage a server named Server1 that runs Microsoft Windows Server 2012 R2 Datacenter edition with the Hyper-V role installed. Server1 hosts several virtual machines (VMs). VM22 is running Windows Server 2012 R2 Standard edition. You need to change the path of the smart paging file to a VHD located on a higher performance physical hard disk.

What should you use? (Each correct answer presents a complete solution. Choose two.)

Choose the correct answers

☒ Move-VM

☒ Set-VMemory

☒ Move-VMStorage

☒ Set-VM

☒ Set-VHD

You are an administrator for an Active Directory Domain Services (AD DS) domain. The network is configured as a single domain configured as Microsoft Windows Server 2008 R2 domain functional level. The domain includes a print server named NetServ1 running Windows Server 2012 R2 Standard edition.

The domain has one organizational unit (OU) for each corporate department. All users and computers for each department are kept in the departmental OU. There is at least one Group Policy object (GPO) linked to each OU for management purposes.

You deploy three new high resolution color print devices as a printer pool. You create a printer for the printer pool. The printer should only be visible and available to computers in the GraphicArts OU.

What should you do?

Choose the correct answer

- ☐ List the printer in the Active Directory (AD).
- ☐ Share the printer through printer properties.
- ☒ Deploy the printer through group policy.
- ☐ Configure BODP.

You manage a file server that runs Microsoft Windows Server 2012 R2. You plan to implement the Data Deduplication feature for shared files and folders.

What step is required before enabling the Data Deduplication feature?

Choose the correct answer

- ☐ Ensure that DFS Replication is disabled for shared files and folders.
- ☒ Ensure that shared files and folders are not stored on the system volume.
- ☐ Ensure that the volume that contains the shared files and folders is formatted with ReFS.
- ☐ Ensure that BitLocker disk encryption is disabled for the volume with shared files and folders.

You are an administrator for an Active Directory Domain Services (AD DS) domain. All domain controllers run Microsoft Windows Server 2012 or Windows Server 2012 R2. The domain includes an organizational unit (OU) named Temps that contains user accounts assigned to temporary employees. Computers assigned to temporary employees run Windows 8 or Windows 8.1.

You create Software Restriction Policies (SRP) in the TempControl OU. SRP Security Levels and Additional Rules are at the default settings. You create a new Network Zone rule as shown in the exhibit. You discover that temporary employees are still able to download and run programs from the Internet.

What is the most likely cause of this issue?

Choose the correct answer

- ☐ The default Security Level is set to Basic User.
- ☐ Network Zone rules are not supported on computers running Windows 8 or Windows 8.1.
- ☐ The default Security Level is set to Unrestricted.
- ☐ Network Zone rules can be applied at the domain level only.

☒ Network Zone rules apply to Windows Installer software packages only.

A server running Windows Server 2012 R2 has a DNS server a single primary zone. The DNS server and zone configurations are shown in the exhibit.

The server worked well for the first few months, but in the last few days users have been reporting trouble accessing Internet resources.

You need to resolve the problem.

What should you do?

Choose the correct answer

- ☒ Use the ipconfig utility.
- ☒ Use the Netsh utility.
- ☒ Check the Scavenge Stale Resource Records option.
- ☒ Delete the cache.dns file.
- ☒ Use the Dnscmd utility.

You manage a server named Server1 that runs Microsoft Windows Server 2008 R2 with the Hyper-V role installed. Several virtual machines (VM) are running on Server1.

You need to use the export function migrate these VMs to a new server that runs Microsoft Windows Server 2012 R2 with the Hyper-V role installed.

What should you do first?

Choose the correct answer



Delete Snapshots for VMs.



Configure VMs to use an IDE Controller for attached Virtual Hard Disks (VHDs).



Configure VMs to use a SCSI Controller for attached Virtual Hard Disks (VHDs).



Convert Virtual Hard Disks (VHD) file to VHDX.

You manage a server named Server1 that runs Microsoft Windows Server 2012 R2 with the Hyper-V role installed. A virtual machine (VM) named VM1 that runs Windows Server 2008 is hosted on Server1. Your company has a Storage Area Network (SAN) that supports NPIV.

You need to configure VM1 to access a Logical Unit Number (LUN) on the SAN.

Which two actions should you perform? (Choose two.)

Choose the correct answers

- ☒ Enable Offloaded Data Transfer on Server1.
- ☒ Install a Host Bus Adapter (HBA) driver that supports Virtual Fibre Channel on Server1.
- ☒ Add an emulated SCSI controller on VM1.
- ☒ Create a virtual Fibre Channel adapter on VM1.
- ☒ Upgrade VM1 to Windows Server 2012.
- ☒ Install a Host Bus Adapter (HBA) driver that supports Virtual Fibre Channel on VM1.

You manage an Active Directory Domain Services (AD DS) domain. Currently all domain controllers run Microsoft Windows Server 2008 R2.

You install a server running Microsoft Windows Server 2012 R2. You need to promote the server to domain controller. You need to use the Install From Media (IFM) option.

What should you do first?

Choose the correct answer



Upgrade one of the existing Server 2008 R2 domain controllers to Windows Server 2012 R2.



Create a system state backup from any Windows Server 2008 R2 server.



Create an IFM backup from any existing Server 2008 R2 backup.

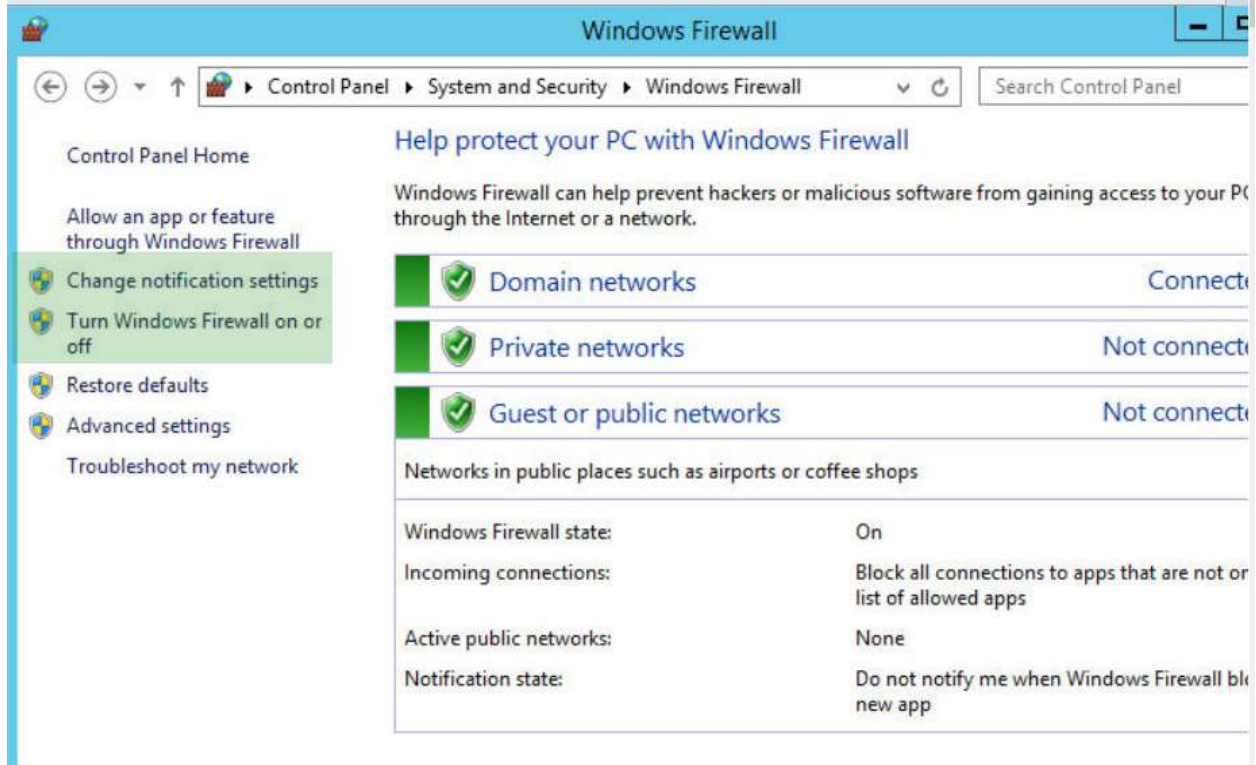


Run the Active Directory Domain Services Wizard on the server running Windows Server 2012 R2.

Your laptop runs Microsoft Windows Server 2012 R2. You use your laptop while traveling for business. You often need to connect to the Internet through public networks. You need to block all incoming connections while connected to a public network, including those in your firewall's list of allowed applications.

Where should you click to configure this option?

Select the correct area



You manage an Active Directory Domain Services (AD DS) domain. Domain controllers run Microsoft Windows Server 2012 R2. The Active Directory domain has several Group Policy objects (GPOs) configured at the domain and site level.

You are planning to create a new Organizational Unit (OU). You need to prevent settings in any domain-level or site-level GPOs from affecting the users in the new OU.

Which PowerShell cmdlet should you use?

Choose the correct answer

- ☐ Remove-GPLink
 - ☒ Set-GPInheritance
 - ☐ Set-GPLink
 - ☐ Set-GPPermission
-

Your network is configured as two subnets connected by a router. The subnets are documented internally as subnet1 and subnet2. A Dynamic Host Configuration Protocol (DHCP) server deployed in subnet2 supports both subnets. The DHCP server is on a computer running Microsoft Windows Server 2012 R2.

In subnet1, you need to configure a computer running Microsoft Windows Server 2012 R2 as a DHCP relay agent.

What should you do?

Choose the correct answer

- ☐ Install the Dynamic Host Configuration Protocol role on the computer.
- ☐ Install the Active Directory Federation Service role on the computer.
- ☒ Install the Remote Access role on the computer.
- ☐ Install the Network Policy and Access Services role on the computer.

You are an administrator for an Active Directory Domain Services (AD DS) domain named corp.local. The domain is at the Windows Server 2008 R2 functional level.

You are promoting a domain member server running Windows Server 2012 R2 to domain controller.

What features are installed by default? (Choose all that apply.)

Choose the correct answers



Domain Name Service (DNS) server



PDC Emulator



Global Catalog (GC)



Schema Master

You manage a server named Server1 that runs Microsoft Windows Server 2012 R2 with the Hyper-V role installed. You are planning to implement Hyper-V Network Virtualization.

You need to specify the Virtual Subnet ID that will be used by the Virtual Machine (VM) that runs on Server1.

Which cmdlet should you use?

Choose the correct answer

- ☒ Set-VMNetworkAdapter
- ☐ Add-VMSwitch
- ☐ Set-VMNetworkAdapterVlan
- ☐ Add-VMNetworkAdapterAcl

You manage a server named Server1 that runs Microsoft Windows Server 2012 R2 with the Hyper-V role installed. A Virtual Machine (VM) named VM1 that also runs Windows Server 2012 R2 is hosted on Server1.

You need to get the average memory allocation for VM1.

What two steps should you take to accomplish this task? (Choose two.)

Choose the correct answers



Run the Measure-VM cmdlet on Server1.



Run the Get-VMMemory cmdlet on Server1.



Run the Get-Counter cmdlet on VM1.



Run the Enable-VMResourceMetering cmdlet on Server1.

You configure a computer running Microsoft Windows Server 2012 R2 as a Dynamic Host Configuration Protocol (DHCP) server. The network also contains a Microsoft Windows Server 2012 R2 configured to run the Windows Deployment Service (WDS).

Your network includes several client computers configured to boot from the network. After configuring the DHCP server, you test the configuration only to discover that the computers trying to boot from the network receive an IP address but fail to contact WDS.

What should you do?

Choose the correct answer

- ☐ On the DHCP server, configure option 44 with the setting PXEClient.
- ☐ On the DHCP server, configure option 6 with the setting PXEClient.
- ☒ On the DHCP server, configure option 60 with the setting PXEClient.
- ☐ Install and configure WDS on the DHCP server.

You are an administrator for an Active Directory Domain Services (AD DS) domain. The domain includes a computer running Microsoft Windows Server 2012 R2 configured as a file server. You share a folder using the share name Critical.

You need to ensure that no more than one user at a time can access the Critical share.

What should you do?

Choose the correct answer

- ☐ Run Net user.
- ☒ Run Net share.
- ☐ Enable Always Offline mode.
- ☐ Change the share name to Critical\$.
- ☐ Run Netsh.

You have a fileserver named Server1 that runs Microsoft Windows Server 2012 R2.

You have shared a folder on Server1 with the share name Accounting and the default settings.

You want to change the caching options for the Accounting share so that all users that access files in the Accounting share store an offline copy of the files on their own computer. You verify that all users have the Enable offline files option set on their computers. You want to achieve this using the least administrative effort.

What command should you run on Server1?

Choose the correct answer

- ☐ Net share Accounting /cache:manual
- ☐ Net share Accounting /cache:branchcache
- ☒ Net share Accounting /cache:documents
- ☐ Net share Accounting /cache:none

You manage an Active Directory Domain Services (AD DS) domain. Domain controllers run Microsoft Windows Server 2012 R2.

You need to create an AppLocker policy that will allow you to restrict the execution of an application that is located in the c:\program files folder on user computers. The program has been digitally signed. You need to ensure that if a user renames or copies the executable to a different folder the AppLocker rule will still work. The rule should work even if the publisher releases a new version of the application.

What should you do?

Choose the correct answer

- ☒ Create an AppLocker Publisher rule.
- ☐ Create an AppLocker Path rule.
- ☐ Use the Get-AppLockerPolicy cmdlet.
- ☐ Create an AppLocker File Hash rule.

Your company has a print server that runs a 32-bit installation of Microsoft Windows Server 2008.

You are designing the migration of the Print Server role to Microsoft Windows Server 2012 R2. You need to ensure that shared resources will be available after the migration. You need to find a solution that requires the least administrative effort.

What should you do?

Choose the correct answer



Install Windows Server 2012 R2 on a separate server and enable the Hyper-V role. Then, convert the existing server into a Virtual Machine (VM) and run it on the new server.



Install Windows Server 2012 R2 on a separate server and use the prnmngr.vbs script to migrate the print server.



Install Windows Server 2012 R2 on a separate server and use Windows Server Migration Tools to migrate the print server.



Perform the upgrade of the existing server to Windows Server 2012 R2 by running the installation from within the OS.

TecServ is a member server in the corp.local domain. The network is configured as multiple subnets.

TecServ is running Microsoft Windows Server 2012 R2. It is configured with a single network adapter. It is configured with an IPv6 address that lets it communicate on the local subnet, but not on other subnets on the local network. You need to modify the address so that it can communicate with devices on other subnets.

Which PowerShell cmdlet should you use?

Choose the correct answer

- ☐ Set-NetIPv6Protocol
- ☐ Set-NetIPInterface
- ☒ Set-NetIPAddress
- ☐ New-NetRoute
- ☐ New-NetIPAddress

Your network is configured as a single subnet containing numerous computers running Microsoft Windows Server 2012, Windows Server 2012 R2, and Microsoft Windows 8.1. The network supports networking services including Dynamic Host Configuration Protocol (DHCP) and Domain Name System (DNS).

You configure a new server running Microsoft Windows Server 2012 R2. You discover that the server is unable to communicate with other servers on the same network. You open a command prompt and run the `ipconfig` command. The result is shown in the exhibit.

You need to enable the server to communicate with other servers.

What should you do? (Each correct answer presents a complete solution. Choose two.)

Choose the correct answers

- ☒ Manually configure a default gateway address.
- ☒ Enable the network interface adapter.
- ☒ On the server run the `ipconfig /registerdns` command.
- ☒ On the server run the `ipconfig /renew` command.
- ☒ Configure the server with a static IP address.

You manage a server named TestHost that runs Microsoft Windows Server 2012 R2 with the Hyper-V role installed. You created two VMs on the host. The VMs are able to communicate with each other and with the host operating system, but not with the external network. You need to enable communications with the external network.

What should you do?

Choose the correct answer

- ☒ Run Set-VMSwitch.
- ☐ Run Add-VMSwitchExtensionPortFeature
- ☐ Run Set-VMSwitchExtensionSwitchFeature
- ☐ Run Add-VMNetworkAdapter

You manage an Active Directory Domain Services (AD DS) domain. Currently all domain controllers run Microsoft Windows Server 2008 R2. You are planning the deployment of the first domain controller running Windows Server 2012 R2.

You need to configure the first domain controller running Windows Server 2012 R2 to meet the following criteria:

- * Run the PDC Emulator role
- * Run the Active Directory Certificate Services role
- * Run the DNS role
- * Run the Schema Master role
- * Be configured as a global catalog server

You run the Active Directory Installation Wizard on the server running Windows Server 2012 R2.

Which of the required criteria will you be able to perform using the Active Directory Installation Wizard? (Choose all that apply.)

Choose the correct answers

☒ Configure the server to run the Schema Master role.

☒ Configure the server to run the PDC Emulator role.

☒ Configure the server as a Global Catalog server.

☒ Install the DNS role.

☒ Install the Active Directory Certificate Services role.

You manage a server named Server1 that runs Microsoft Windows Server 2012 R2 with the DNS Server role installed. The DNS zone is signed by DNSSEC.

You need to ensure that all computers in the network will only accept signed responses from the DNS Server.

What should you do next?

Choose the correct answer

- ☐ Configure IPsec on Server1.
- ☒ Create a GPO and link it to the domain.
- ☐ Configure IPsec on the client computers.
- ☐ Configure clients to use TCP only for DNS requests.

You need to configure a computer running a full installation of Microsoft Windows Server 2012 R2.

You need to configure the firewall on the server to support Remote Desktop connections.

What two commands can you use? (Choose two.)

Choose the correct answers

- ☐ Set-RDWorkspace
- ☐ netsh firewall set opmode ENABLE
- ☒ netsh firewall set service RemoteDesktop enable
- ☒ netsh advfirewall firewall set rule group="remote desktop" new enable=Yes
- ☐ netsh firewall add portopening TCP 1723 "Open Port 1723"

Your company has a main office one branch office. The branch office has 500 computers. The company is expecting rapid growth and expansion to additional branch offices in the future.

You are configuring networking for the branch office. You need to select a network address that will support the 500 computers in one subnet. The solution must minimize the amount of unused addresses in the subnet.

Which network address should you configure?

Choose the correct answer

☐ 10.0.0.0/16

☒ 10.0.0.0/23

☐ 10.0.0.0/22

☐ 10.0.0.0/24

Server1 is running Windows Server 2012. It is configured with the Hyper-V role. Four virtual machines are running on Server1. They are configured as shown in the exhibit. The virtual machines are used for testing and do not have networking enabled.

When managing the virtual machines from Server1, you need to be able to access files from the USB flash drive attached to Server1 by using the Virtual Machine Connection Tool. You need to make only the necessary changes.

What should you do?

Place the action you should take under the appropriate computer. A solution may be used once, more than once, or not at all.

Drag and drop the answers

Actions

Ensure that Enhanced Session Mode is enabled

Ensure that Remote Administration is enabled

Ensure that the Remote Desktop Service is enabled

Upgrade to Windows 8.1

Upgrade to Windows Server 2012 R2

Install Integration Services

Computers

^ Server1

Upgrade to Windows Server 2012 R2

Ensure that Enhanced Session Mode is enabled

+
x

^ VM1

Upgrade to Windows 8.1

Ensure that the Remote Desktop Service is enabled

^ VM2

Upgrade to Windows 8.1

Ensure that the Remote Desktop Service is enabled

^ VM3

Upgrade to Windows Server 2012 R2

×

Ensure that the Remote Desktop Service is enabled

×

^ VM4

Upgrade to Windows Server 2012 R2

×

Ensure that the Remote Desktop Service is enabled

×

You are managing an Active Directory Domain Services (AD DS) domain named example.com. All of the domain controllers are running Microsoft Windows Server 2012 R2. Users who work for the Sales department are frequently changing their primary office location. All these user accounts are members of the Sales domain group and they also reside in the Organizational Unit (OU) named Sales.

You need to allow help desk users to change address information for these users. You need to find a solution that requires the least administrative effort.

What should you do first?

Choose the correct answer

- ☒ Run the Delegation of Control wizard for the Sales OU.
- ☐ Run the Delegation of Control wizard for the Sales domain group.
- ☐ Add the help desk users to the Account Operators group.
- ☐ Instruct help desk users to use Active Directory Web Services.

You are an administrator for an Active Directory Domain Services (AD DS) domain named corp.local. You need to create a computer object and ensure that the object is not accidentally deleted.

What should you use?

Choose the correct answer

- ☒ Active Directory Administrative Center
- ☐ Dsadd
- ☐ Active Directory Users and Computers
- ☐ New-ADComputer

You manage a server named Server1 that runs Microsoft Windows Server 2012 R2 with the Hyper-V role installed. Server1 hosts a virtual machine (VM) named VM1 running Windows Server 2012 R2. VM1 will host an instance of SQL Server 2008.

Server1 has a directly attached 4 TB hard disk configured as drive F:. You want to use this disk as storage for the SQL Server instance. You need to use a storage configuration that optimizes write performance.

What should you do first?

Choose the correct answer

- ☒ Delete the current volume.
- ☒ Create a single VHDX disk on the drive.
- ☒ Take the hard disk offline.
- ☒ Configure the hard disk as a storage pool.

Your network includes a main office and one branch office. All of the servers are running Microsoft Windows Server 2012 R2 and all the clients are running Windows 8 or Windows 8.1. You installed a print server named Printserver1 in the main office. All of the client computers use Printserver1 for print jobs.

Users in the branch office are complaining that sometimes printing is very slow and when the Internet connection is down, they cannot print at all. The branch office employees use a printer named BranchPrint1.

You need to make sure that the users can print while still receiving printer configurations from Printserver1.

What should you do? (Each correct answer presents a complete solution. Choose two.)

Choose the correct answers

- ☒ Run the Set-PrintConfiguration cmdlet on the printer.
- ☒ On all the client computers, delete the printer BranchPrint1 and create it again, but with a direct TCP/IP connection to the print device
- ☒ Run the Set-Printer cmdlet on Printserver1
- ☒ Run the Set-Printer cmdlet on each client computer.
- ☒ Open Print Management on Printserver1, right-click the BranchPrint1 printer and enable Branch Office Direct Printing

You are the administrator for an Active Directory Domain Services (AD DS) domain named corp.local. The domain includes of several servers running Windows Server 2012 R2 located at different physical locations.

The company has been growing very rapidly and you have been adding a lot of new servers to the domain. Several servers have required specialized custom configurations.

You are concerned that there might be some misconfiguration on some of the servers. You need to be able to perform a quick check on all of the servers from one location to locate any potential problems.

What should you do?

Choose the correct answer

Use the Security Configuration and Analysis snap-in to scan the servers.



Use the Security Configuration wizard.



In Server Manager on one of the Microsoft Windows Server 2012 R2 servers, use the all servers node to run a best practice analyzer scan.



Download and run the Microsoft Best Practice Analyzer tool.

Your network includes a server running Microsoft Windows Server 2012 R2 that is configured as a Dynamic Host Configuration Protocol (DHCP) server. The server is the only DHCP server in your network.

By inspection you discover that the DHCP server is leasing out IP addresses to some unknown computers. For security reasons, you need to prevent the computers from obtaining an IP address from the DHCP server. You need to resolve the problem using the least amount of administrative effort.

What should you do?

Choose the correct answer



Configure a Deny Filter containing the unknown computers.



Configure a Policy on the DHCP server.



Locate the computers and assign a static IP address.



Configure a reservation for each unknown computer.

You manage a server named Server1 that runs Microsoft Windows Server 2012 R2 with the DNS Server role installed.

You need to configure a DNS record for a web server. All clients will use IPv6 for name resolution.

What type of DNS resource record should you create?

Choose the correct answer

☐ A

☐ PTR

☒ AAAA

☐ DS

You manage a server named Server1 that runs Microsoft Windows Server 2012 R2 with the Hyper-V role installed. You are planning to run a virtual machine (VM) named VM1 on Server1. You need to configure SR-IOV for VM1.

Which PowerShell cmdlet should you use to enable SR-IOV?

Choose the correct answer

- ☒ New-VMSwitch
- ☐ Add-VMSwitchExtensionPortFeature
- ☐ Add-VMSwitch
- ☐ Enable-VMSwitchExtension